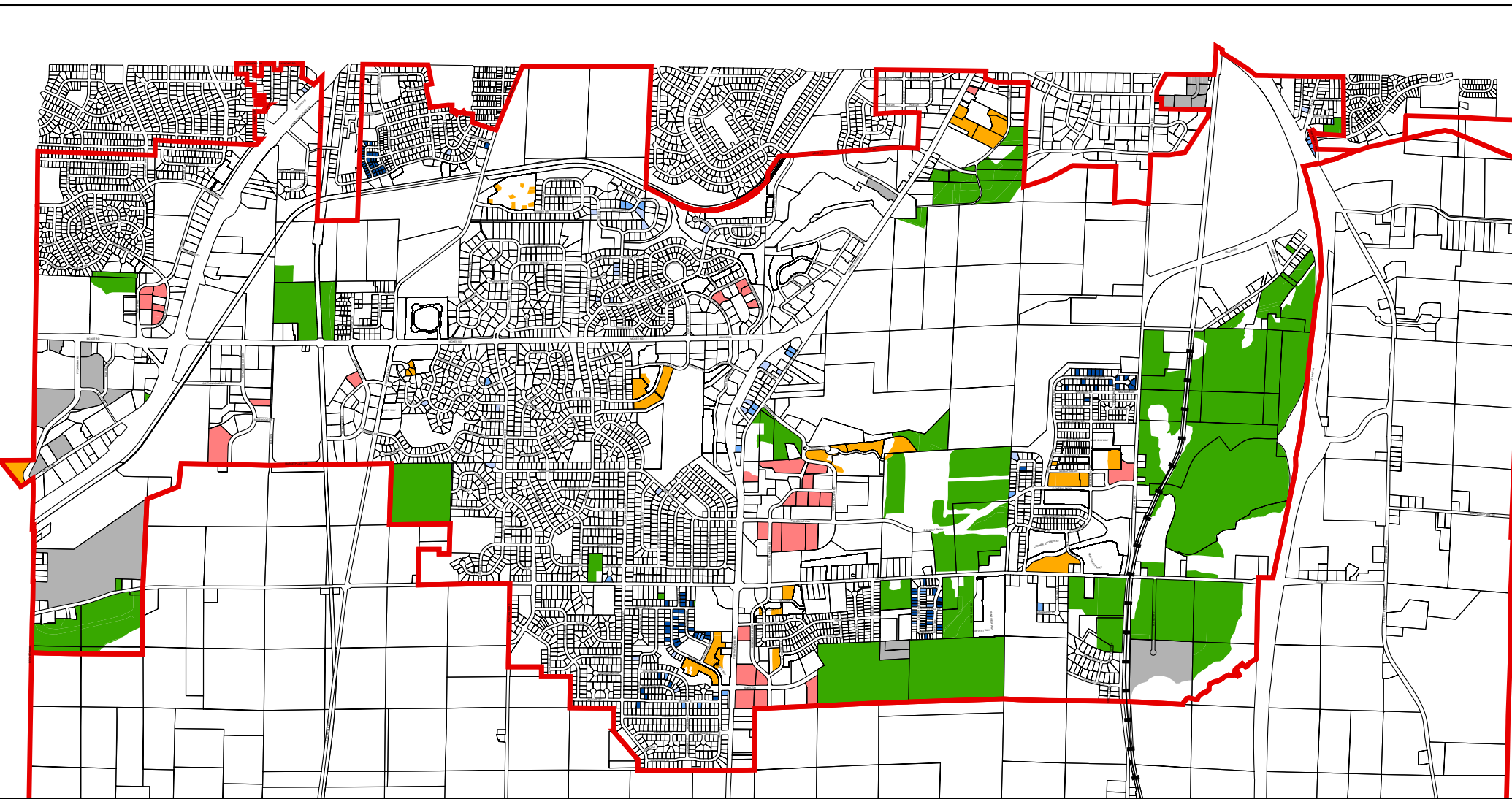


Vacant Land within the Urban Service Area



Legend

- Urban Service Area
- Multi / Condo Residential
- SF Residential Ownership
- Redevelopment / Infill
- Developer/Builder
- Commercial / Industrial
- Privately Owned
- Unplatted
- Own Adjacent Lot

Land Use	Acres
Single-Family Lots - 149 lots	35.8
Developer/Builder - 98 lots	18.8
Privately Owned - 27 lots	8.5
Own Adjacent Lot - 24 lots	8.5
Multi / Condo Residential	69.27
48 single-family pads	13.85
32 duplex pads	9.12
3 four unit pads	0.97
4 sixteen unit pads	3.42
1 eighteen unit pad	1.09
18 Vacant Multi-Family Lots	40.82
Commercial / Industrial - 32 lots	76.34
Redevelopment/Infill - 22 lots	150.91
Unplatted	851.98
Total	1,184.30

Prepared by:
 Planning/Zoning
 Sources:
 Planning/Zoning
 Dane County LIO
 June 1, 2011 Data

